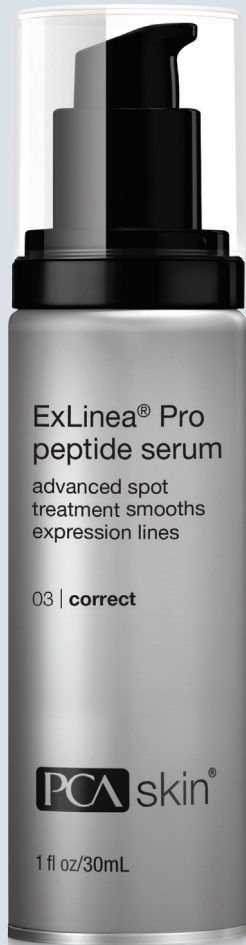


# ExLinea® Pro Peptide Serum



Dramatically minimize the appearance of fine lines and wrinkles with this advanced neuropeptide spot treatment. Formulated with our proprietary technology, **Peptide-Pro Complex**, this powerful blend contains four unique ingredients that work synergistically to help relax facial muscle contractions and reduce the appearance of visible expression lines.

## KEY BENEFITS

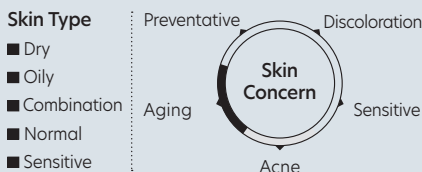
- ✓ Helps deliver an immediate and long-term reduction of visible expression lines caused by repeated muscle movement
- ✓ Helps lift, tighten, and firm skin for a younger-looking, more defined facial contour
- ✓ Strengthens skin by improving epidermal thickness
- ✓ Reduces skin roughness for a smoother skin texture
- ✓ Increases moisturization and hydration retention

## OUR PROPRIETARY TECHNOLOGY

**Peptide-Pro Complex** - a proprietary technology that contains proven efficacious levels of neuropeptides, proteins, amino acids, and marine extracts to help visibly improve the appearance of expression lines, skin roughness, and laxity while increasing skin hydration.

## KEY INGREDIENTS IN PEPTIDE-PRO COMPLEX

- + **Snap-8 (Acetyl Octapeptide-3)** - an eight amino acid peptide that affects nerve-to-muscle communication to help reduce facial muscle contractions. It also helps reduce skin roughness and wrinkle depth.
- + **Argireline Amplified (Acetyl Hexapeptide-8)** - a next-generation peptide that reduces muscle contractions and improves the relaxation of muscle contractions after facial expressions to minimize fine lines and wrinkles.
- + **Polysaccharide-Amino Acid Blend** - an effective monolayer composed of proteins, algae, and amino acids that boosts skin's moisture retention and the penetration of other functional ingredients. It enhances elasticity and helps smooth, hydrate, and lift skin.
- + **Bacillus/Soybean Ferment Extract** - a marine extract that provides a contouring and firming effect on loose skin, improving the overall appearance of sagging skin.



## Directions for use \* 🌙

After cleansing and toning, smooth onto areas of wrinkling and laxity, concentrating on the lines around the eyes, forehead, and mouth. Use twice daily for maximum benefits. Follow with the appropriate PCA SKIN® treatment serums, and broad spectrum SPF product in the daytime and moisturizer in the evening.

Retail: 1 fl oz | Trial: 0.17 fl oz

## Ingredients

Water, Glycerin, Pentylene Glycol, Glyceryl Isostearate, Isostearyl Isostearate, C13-15 Alkane, Betaine, Acrylates/C10-30 Alkyl Acrylate Crosspolymer, Xanthan Gum, Methyl Gluceth-20, Oryza Sativa (Rice) Starch, Polyglyceryl-3 Laurate, Sodium Levulinate, Caprylyl Glycol, Levulinic Acid, Polyglyceryl-6 Oleate, Hydrolyzed Wheat Protein, Ethylhexylglycerin, Hydrolyzed Soy Protein, Sodium Hydroxide, Tetrasodium Glutamate Diacetate, Butylene Glycol, Pectin, Hydroxyethylcellulose, Arginine, Proline, Serine, Glucose, Acetyl Octapeptide-3, Bacillus/Soybean Ferment Extract, Sodium Hyaluronate, Chondrus Crispus (Carrageenan) Extract, Acetyl Hexapeptide-8, Disodium Phosphate, Polysorbate 60, Sodium Phosphate.

## CLINICAL STUDY DATA

ExLinea® Pro Peptide Serum was tested on 31 female participants between the ages of 35 and 55 years old with Fitzpatrick types ranging from I to III. The study evaluated the product's effects on the skin when applied twice daily over 12 weeks.

## IMMEDIATE RESULTS

- Subjects showed a statistically significant lifting and tightening effect immediately after one application

## RESULTS AFTER 4 WEEKS

- Subjects showed a statistically significant reduction in the appearance of fine lines on the forehead and around the eyes and mouth
- 100% of subjects showed a visible improvement in skin smoothness, lifting, and tightening

## RESULTS AFTER 12 WEEKS

- 100% of subjects demonstrated a visible reduction in fine lines and wrinkles
- 100% of subjects demonstrated an improvement in skin firmness

## Pro Tips

Use ExLinea® Pro Peptide Serum as the first corrective serum in a regimen. Spot treating before applying other correctives allows the product to absorb better. Use twice daily for optimal results.

For additional firming, tightening, and contouring benefits, apply full-face and on the neck focusing on areas of laxity.

Pair ExLinea® Pro Peptide Serum with professional in-office treatments and neurotoxin injections to support patient results.

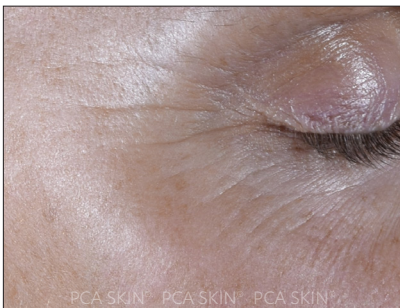
Before



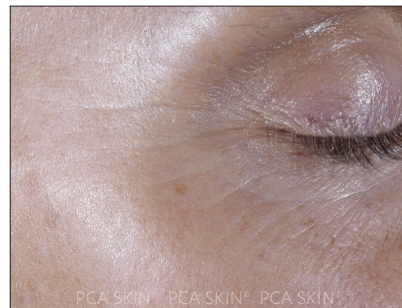
After 12 weeks



Before



After 12 weeks



Before



After 12 weeks

